



Nature-based Recovery can create jobs, deliver growth and provide value for nature

ILO Webinar

Session 2: There is work to do! Public investment to create jobs in green and care sectors

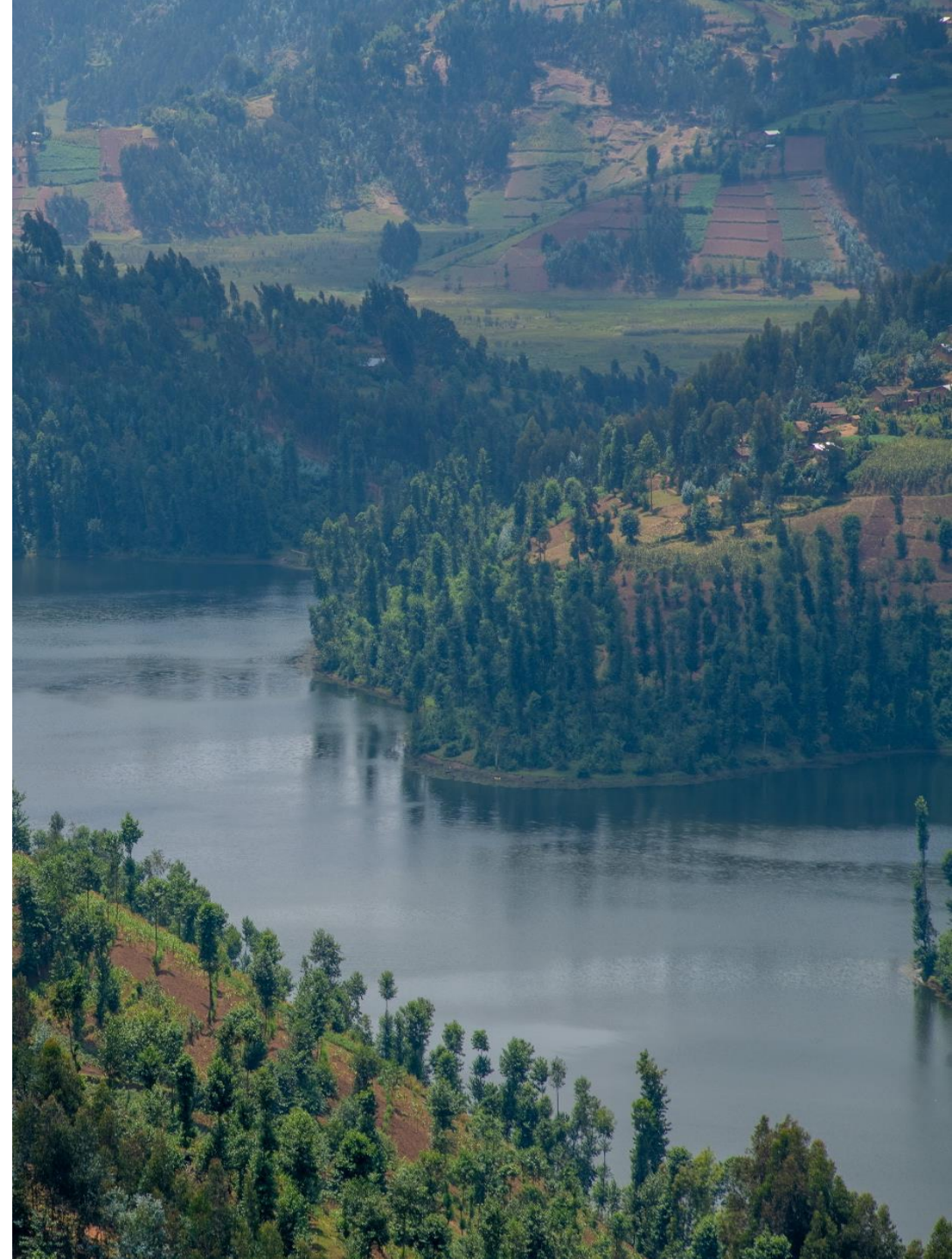
21 October, 2021

Leander Raes

IUCN Economics Knowledge Unit

Overview

- Measuring jobs in forest landscape restoration
- Gender, jobs and forest landscape restoration
- Different restoration practices and employment
- Jobs, restoration and other benefits

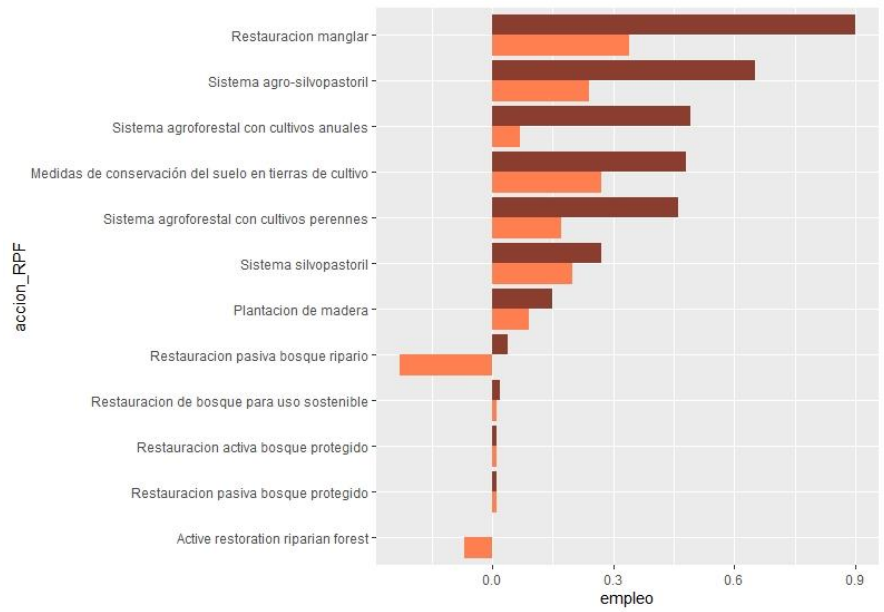


Some general concepts

- Focus on **green jobs**, specifically in the implementation and maintenance of **forest landscape restoration** interventions
- Estimating ex-ante job creation
- Measuring jobs in restoration
 - Estimates (for example based on intervention models)
 - Government data (for example project data)
 - Direct and indirect jobs
- Units of measurement
 - Full time employment equivalent (FTE)
 - Long and short term jobs

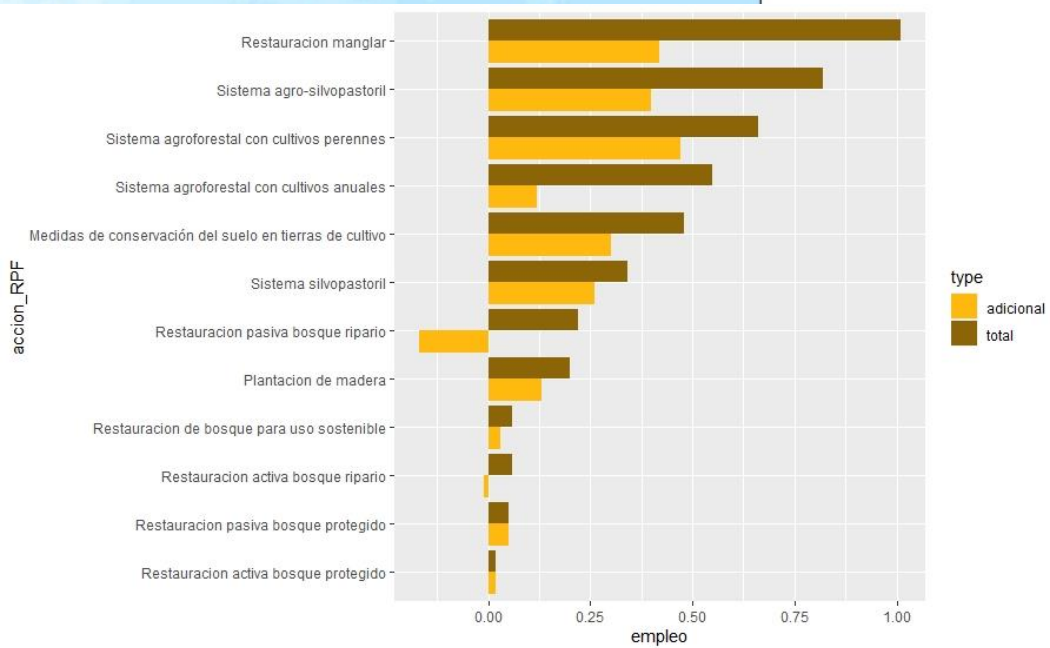
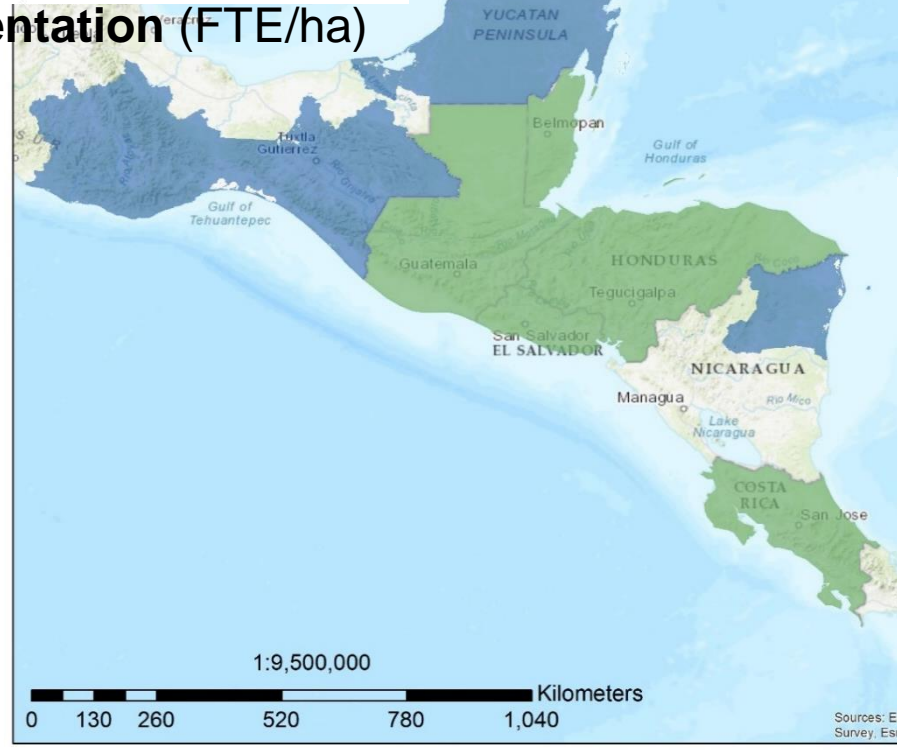


Estimating job creation through forest landscape restoration



Job creation **FLR implementation** (FTE/ha)

Job creation **FLR maintenance** (FTE/ha)

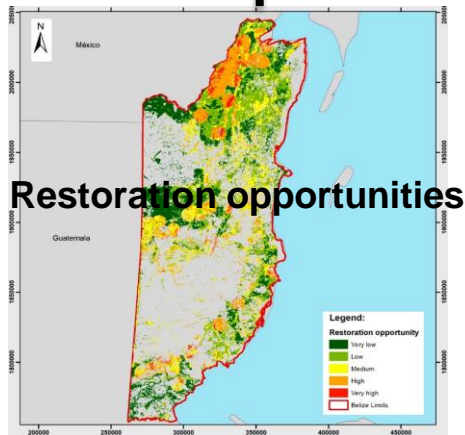


Prioritizing FLR actions and areas for implementation

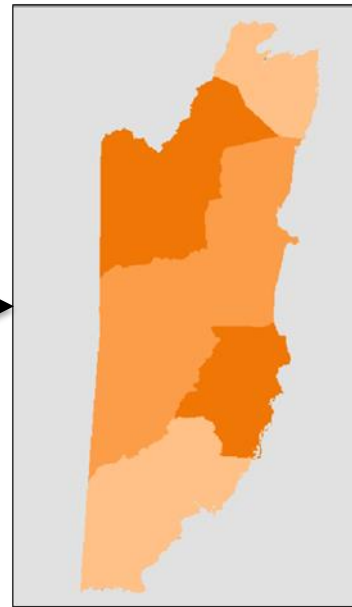
Example from Belize

Impact job creation FLR actions

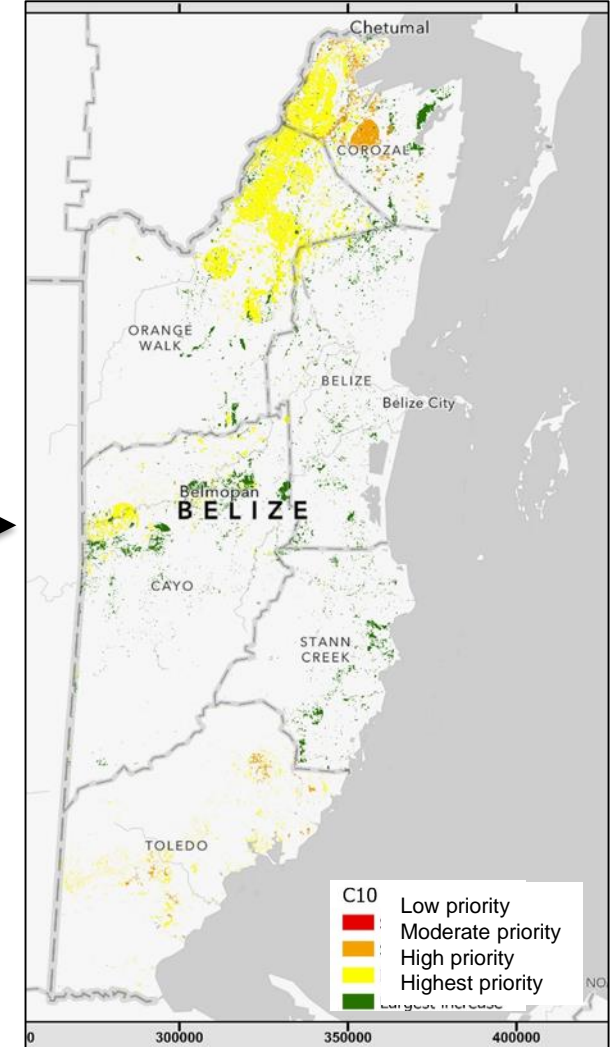
FLR action	Net job creation (FTE)	
	Implementation	Maintenance
GAP in banana	0.08	0.07
GAP in rice	0.03	0.03
GAP in sugarcane	0.09	0.06
Silvopastoral system	0.03	0.03
Orange & coconut diversified system	0.24	0.19
Riparian forest restoration (active)	-0.01	-0.07
Riparian forest restoration (passive)	-0.03	-0.07



Unemployment Per district

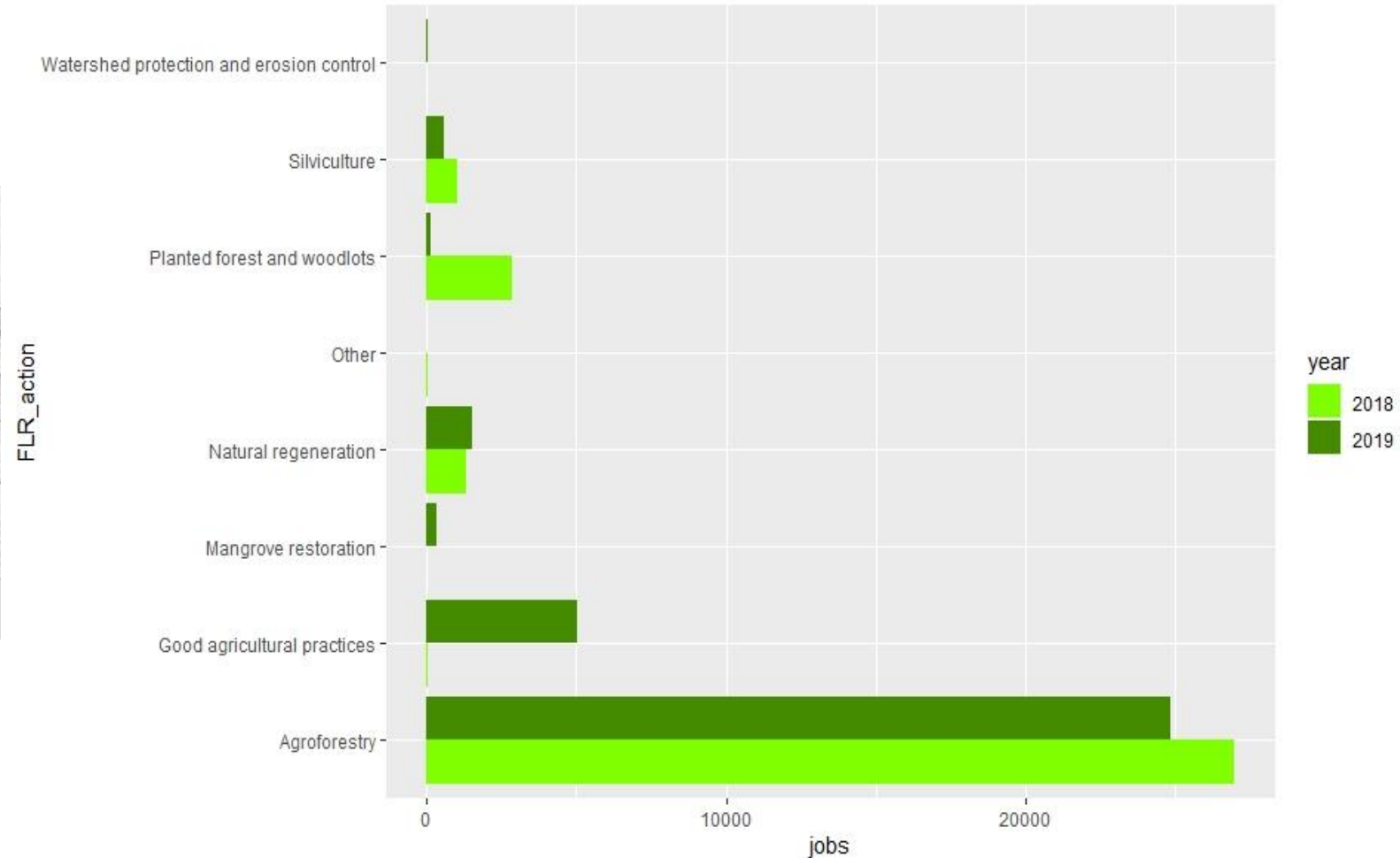
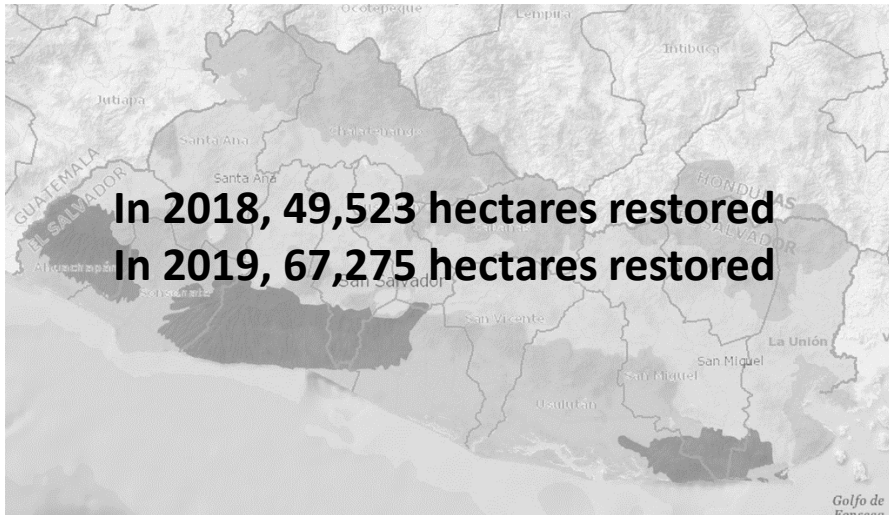


Restoration priorities for job creation



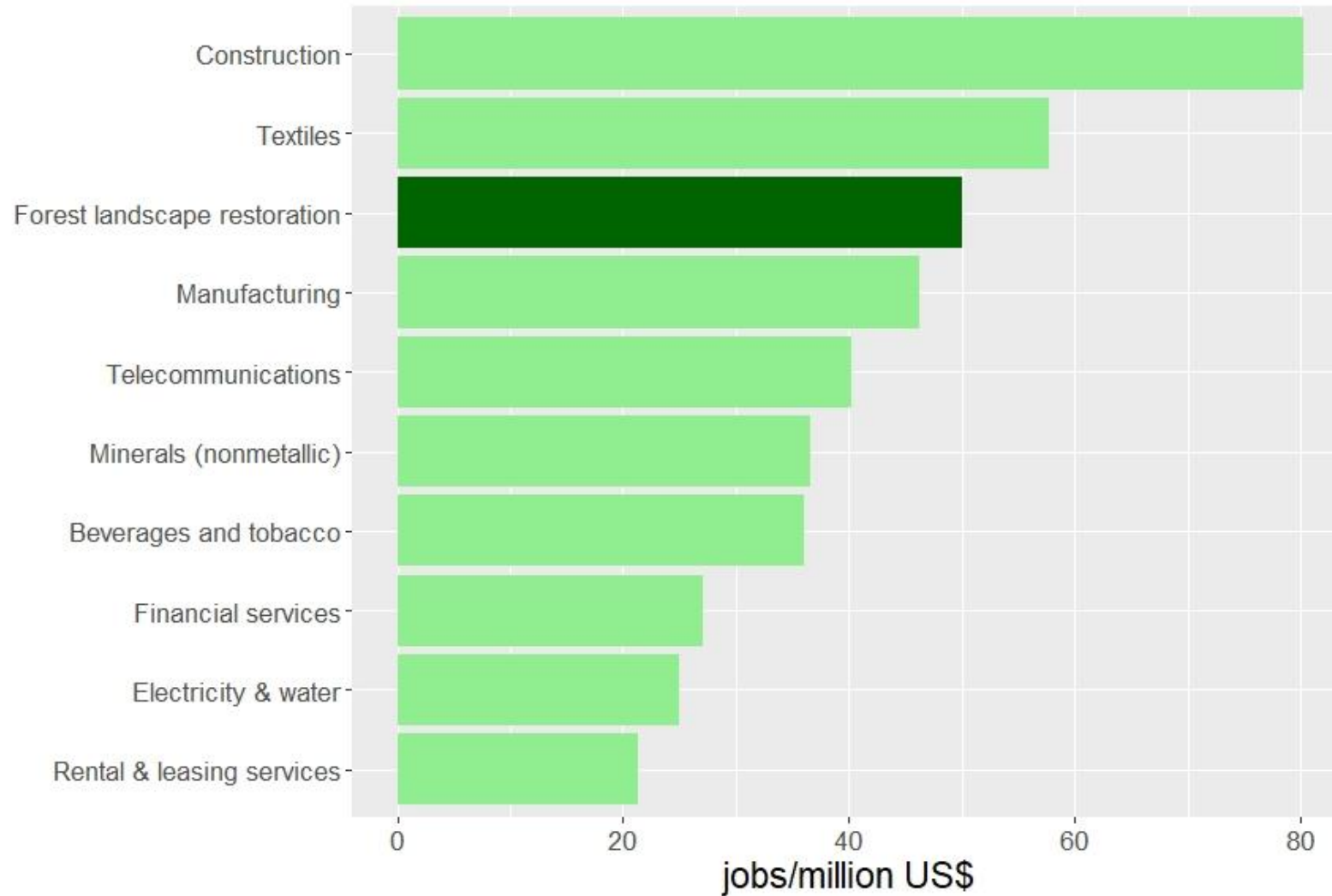
Estimating employment in forest landscape restoration

Example from El Salvador



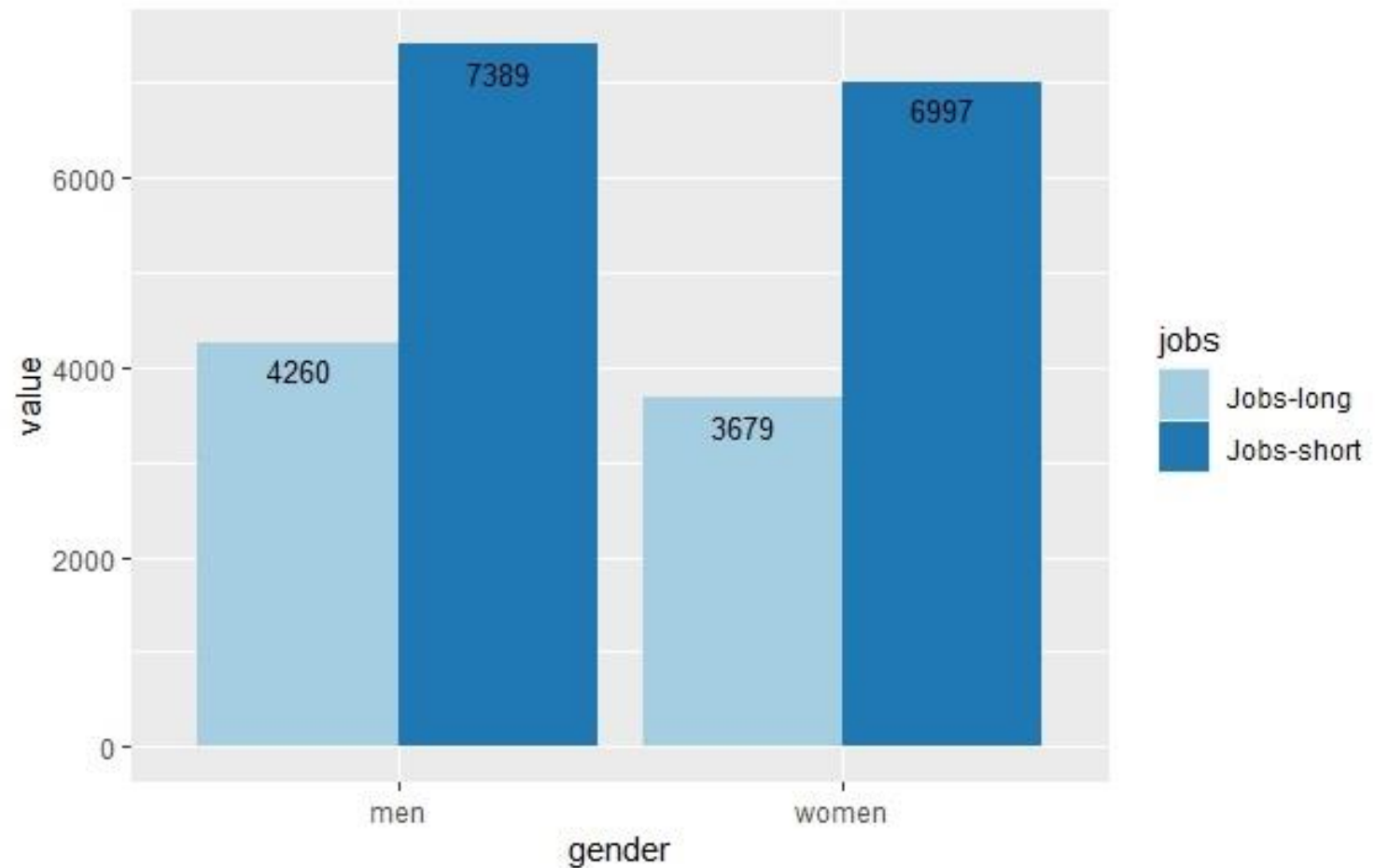
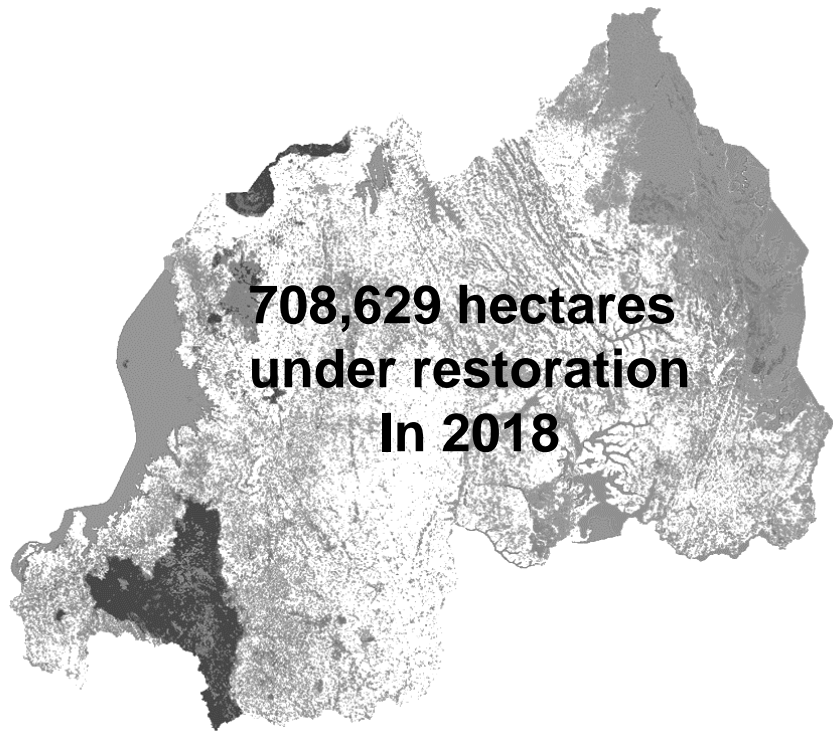
Direct and indirect job creation

Example from El Salvador



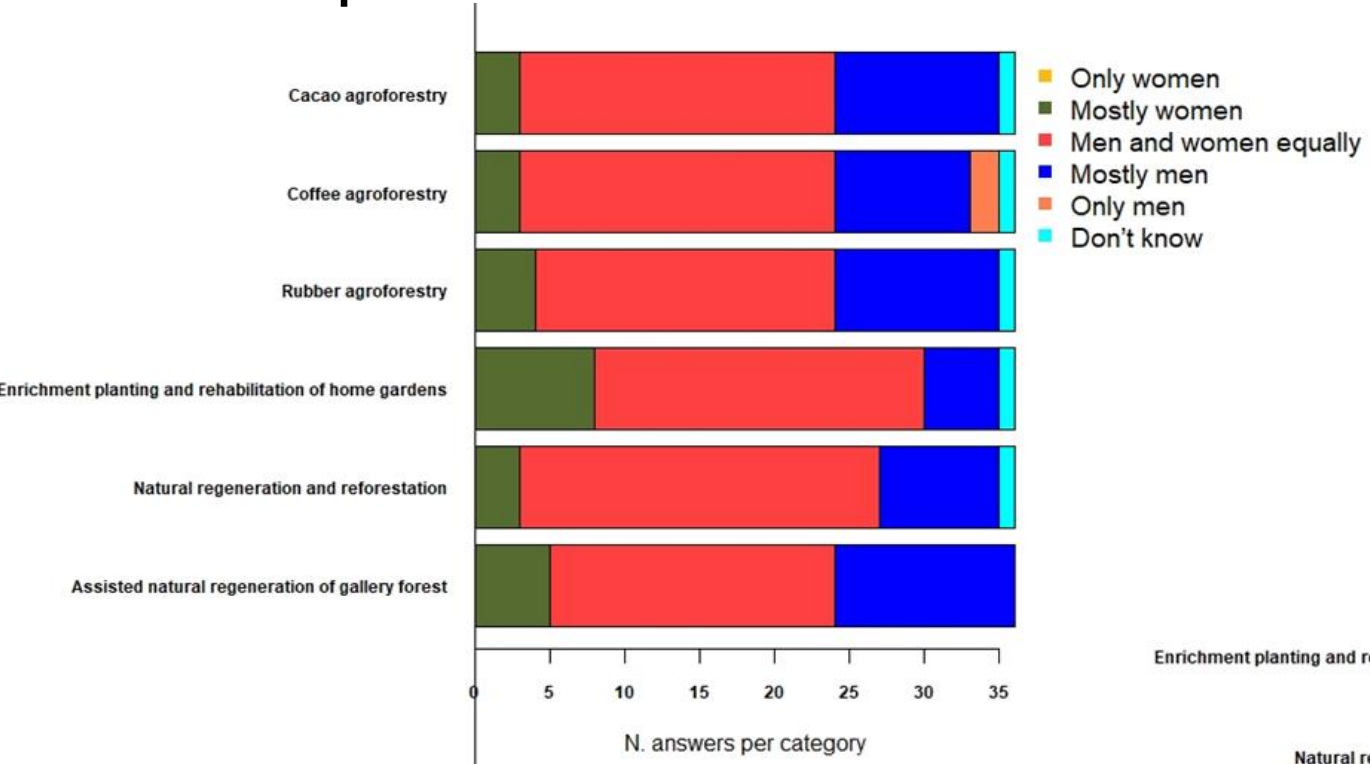
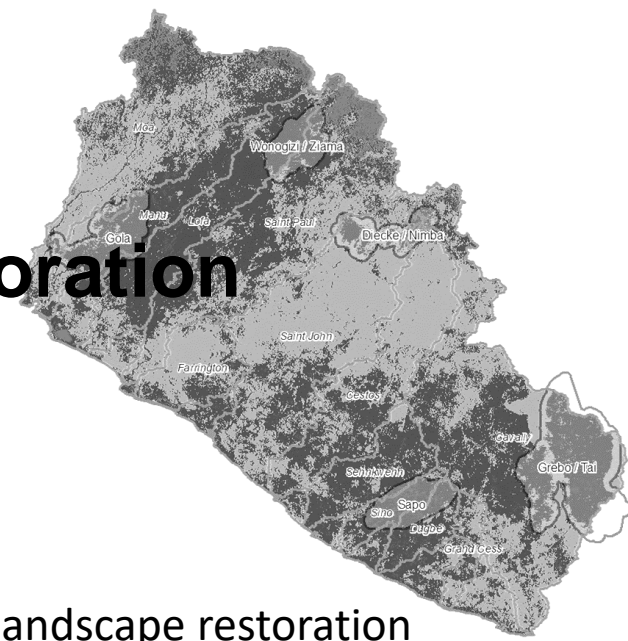
Gender and employment in forest landscape restoration

Example from Rwanda



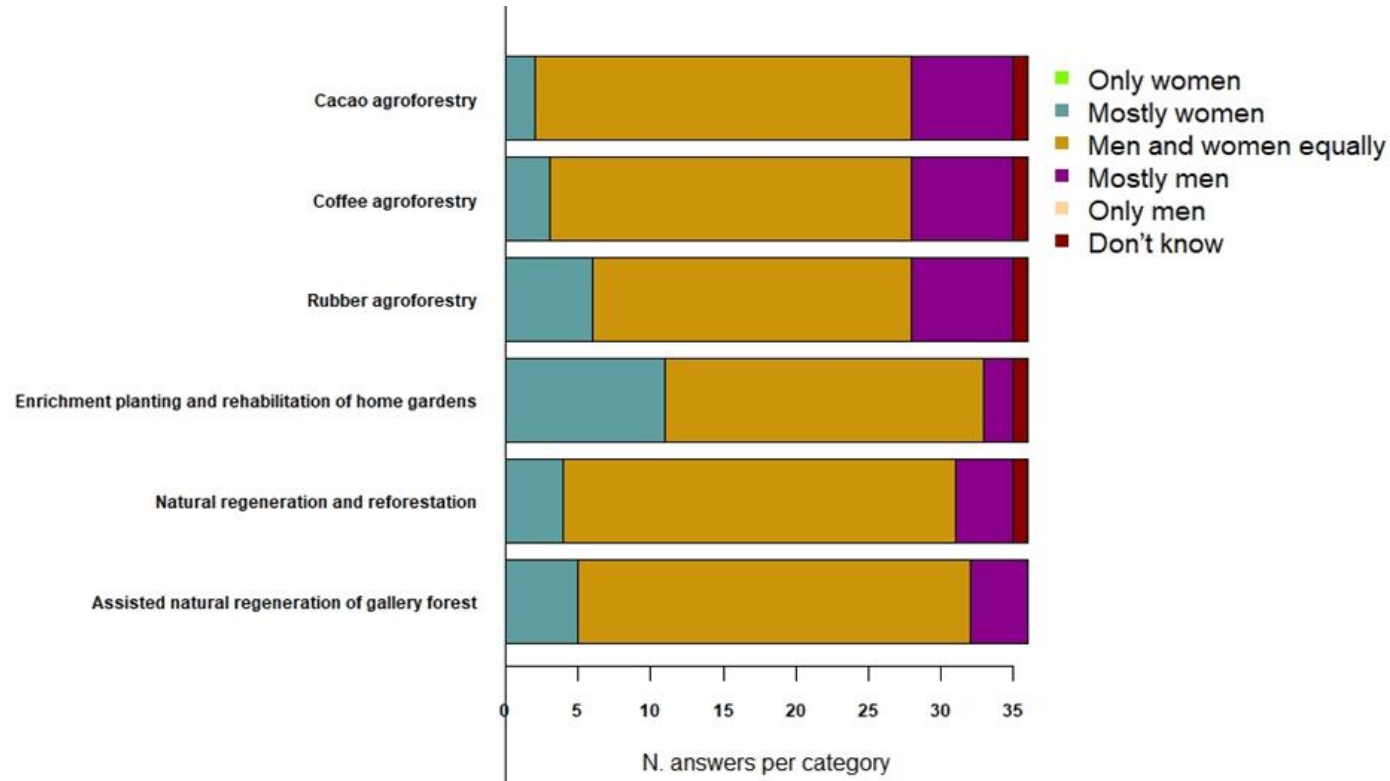
Gender and employment in forest landscape restoration

Example from Manu River Union



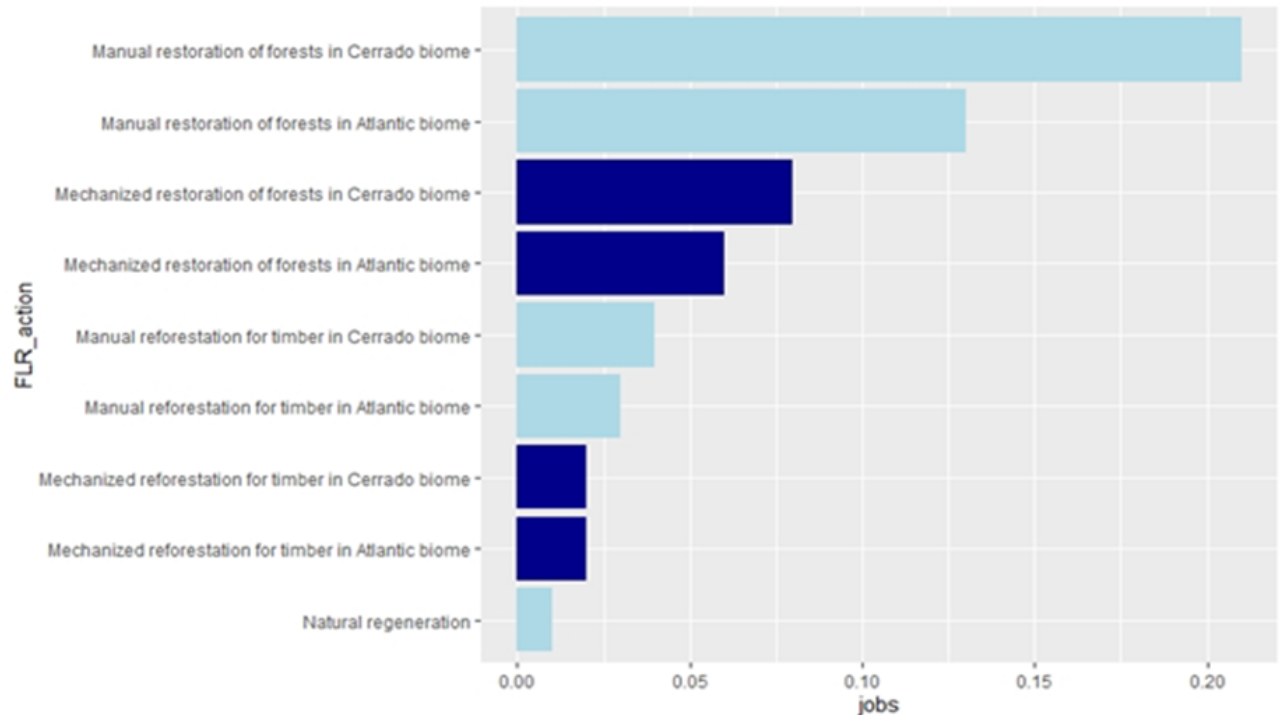
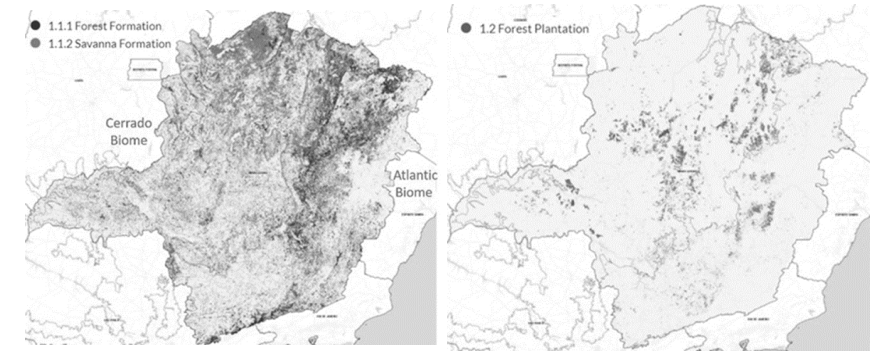
Work division forest landscape restoration

Revenue division forest landscape restoration

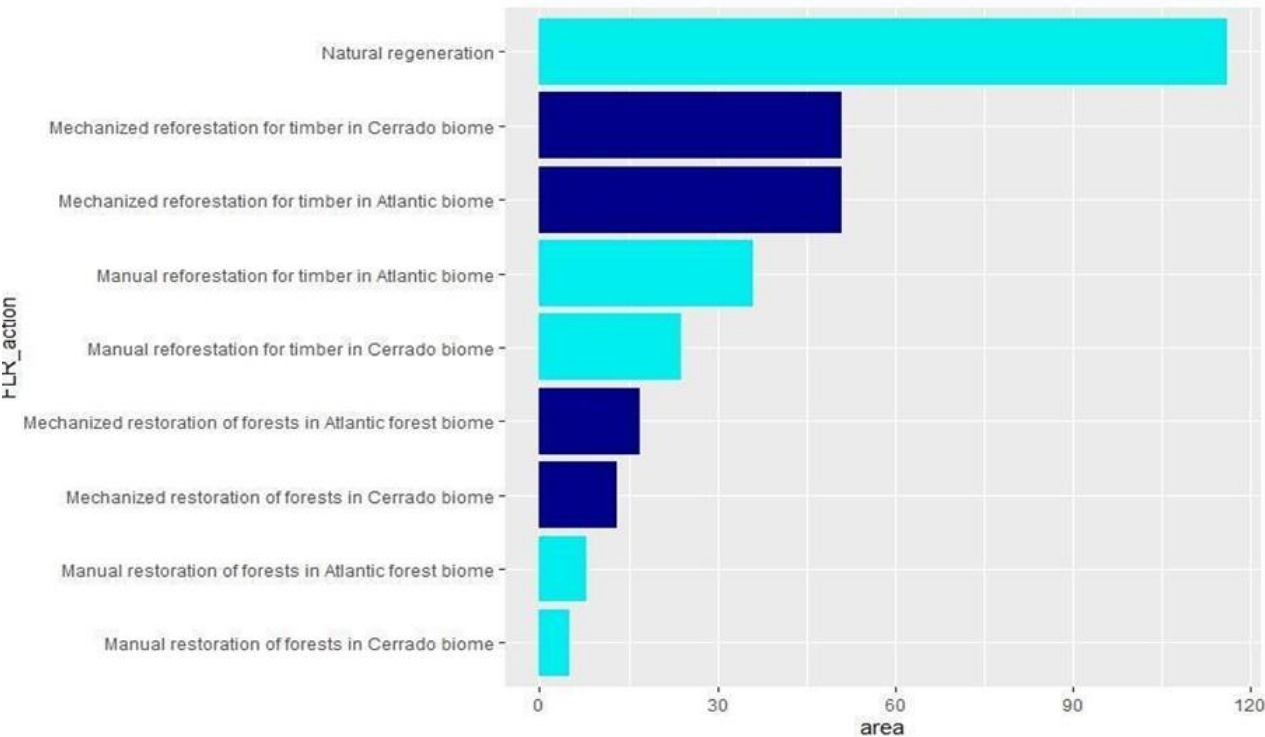


Manual versus mechanized restoration

Example from Minas Gerais, Brazil



Hectares restored per full-time equivalent jobs by restoration actions



Full-time equivalent jobs per hectare in restoration



Other benefits of investing in landscape restoration

Examples from Oaxaca, Mexico, and from El Salvador and Honduras

FLR action	Direct job creation (ha/year)	Total net present value (MXN/ha)	FLR action	Additional jobs implementation (FTE/ha/year)	Additional jobs maintenance (FTE/ha/year)	Carbon balance (CO ₂ e/ha/year)
Agave agroforestry	0.20	1,572,972	Agroforestry systems with annual crops	0.12	0.07	44
Milpa system with fruit trees on hillsides	0.40	750,774	Agroforestry systems with perennial crops	0.59	0.17	31
Coffee agroforestry system	1.23	1,955,937	Silvopastoral systems	0.37	0.29	4
Silvopastoral conservation system	0.12	216,295	Agro-silvopastoral systems	0.20	0.12	37
			Timber plantation and woodlots	0.07	0.04	30
			Restoration degraded forest for sustainable use	0.03	0.00	3
			Mangrove restoration	0.42	0.34	83
			Soil conservation measures on cropland	0.27	0.24	70
			Passive restoration riparian forest	-0.16	-0.20	127



**International Union for
Conservation of Nature**

THANKS

leander.raes@iucn.org

For more information, see [IUCN Nature-based Recovery Initiative](#)