

Compiling of labour migration data in Thailand

National Statistical Office, Thailand

Thailand Statistical Master Plan

The Statistics Act 2007 states that it is the obligation of NSO to develop a statistical master plan for all government agencies to ensure that Thailand's statistical development supports national policies and development plans.

The NSO, in collaboration with all line ministries, has therefore developed Thailand's first Statistical Master Plan 2011-2015 and the 2nd 2016-2021.

The drafting process was based on participation of line ministries and consultation with other stakeholders.

21 Subcommittees

The Economic part

National Accounts

Agriculture and Fisheries

Industry

Energy

Trade and Price

Transportation and Logistics

Information Communication
and Technology

Tourism and Sports

Finance, Banking and
Insurance

Fiscal

Science, Technology and
Innovation

The Social part

Demographic, Population and
Housing

Labour

Education

Religion, Art and Culture

Health

Social Security

Gender

Household Income and
Expenditures

Justice, Security, Political
and Public Administration

The Natural Resources and Environment part

Natural Resources and Environment

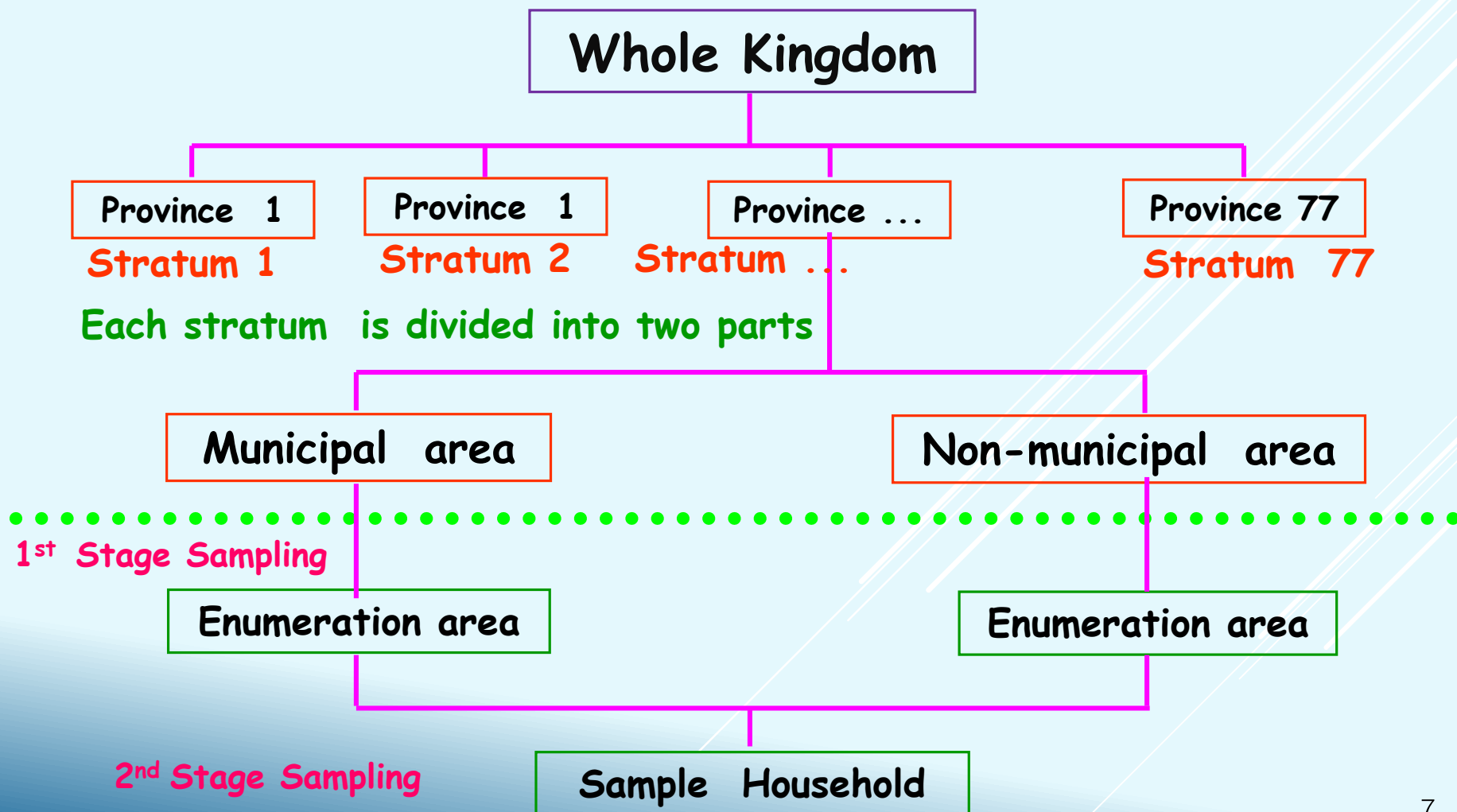
Subcommittee on Labour Statistics

- ➡ 24 members from 12 agencies
- ➡ 79 Official Statistics and 117 indicators
- ➡ Official Statistics that related to labour migration statistics:
 - ★ Foreign workers in Thailand (Total 4 indicators)
 - ★ Thai workers abroad (Total 1 indicator)

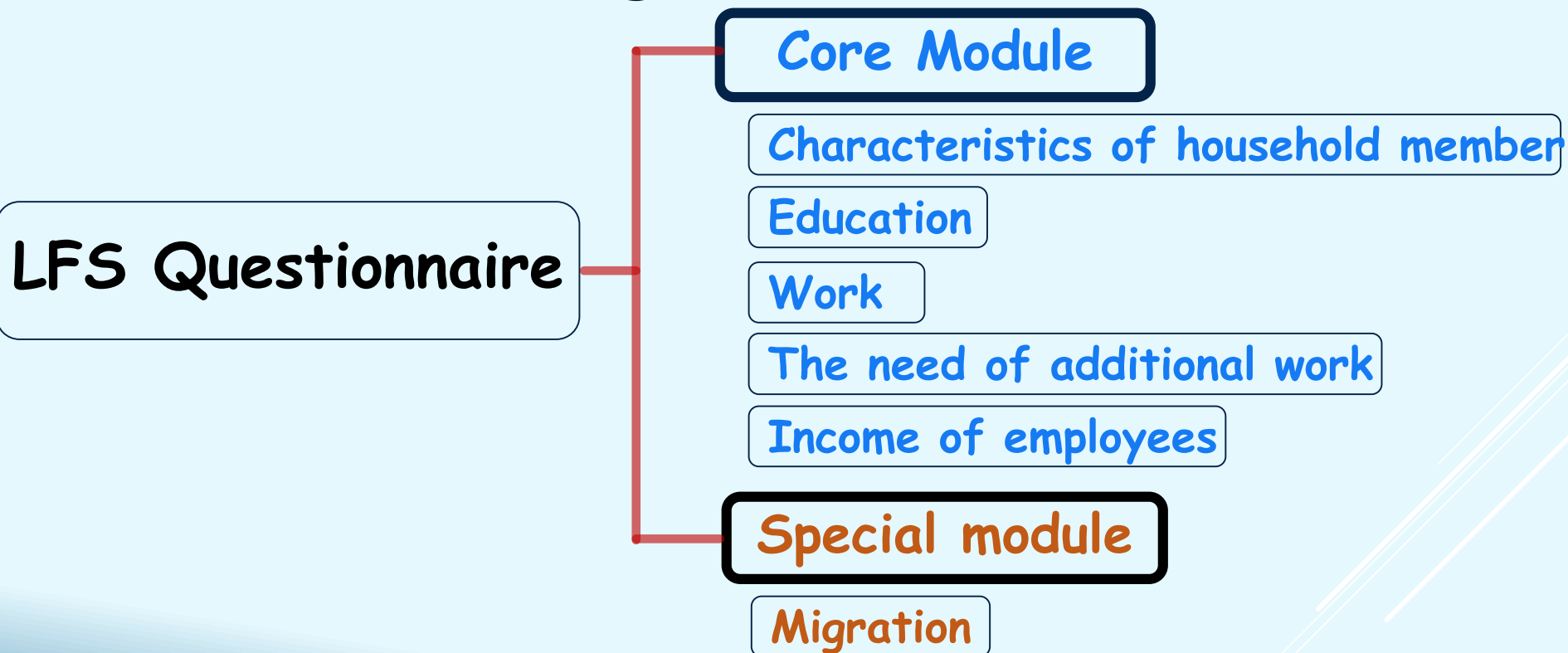
- NSO has compiled labour migration data from The Labour Force Survey and the Migration Survey

- **Target Population:** Population reside in the private and group of employees household (Worker's household)
- **Reference Period:** refer to 7 days before the interviewing date for example if the interviewing date was February 9, 2018 "during 7 days before interviewing date was during February 2nd-8th , 2018"

Stratified Two - Stage Sampling



- The LFS and the Migration Survey have been conducted together



- Conducted throughout country during the date of 1st - 12th in October-December

Data Collection (cont.)

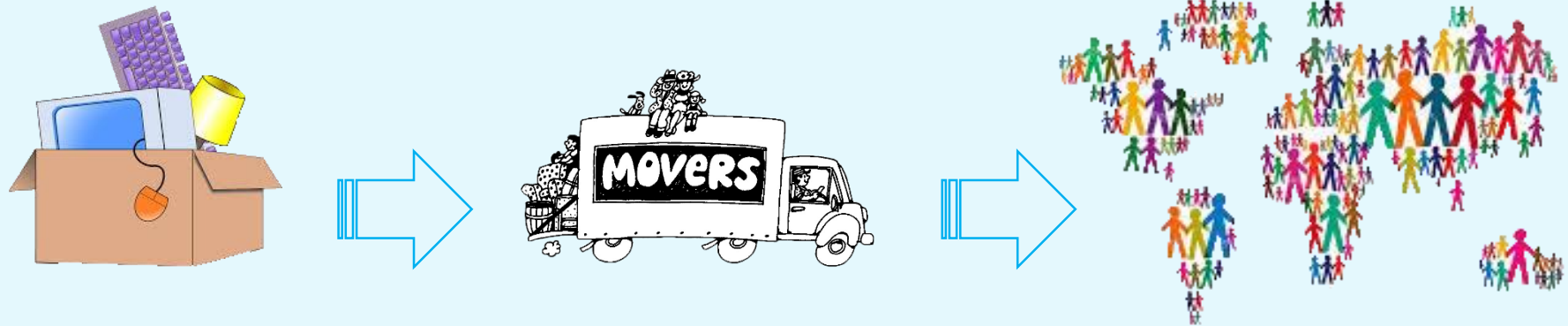
- The data collection was face to face interview with head of household or members of the household by the high experienced interviewers
- There were 44 interviewers in Bangkok and 830 interviewers in all other provinces

Data Collection (cont.)

- Face to face data collection was previously paper-based
- Since 3rd quarter in 2013, NSO has started using Tablet offering the advantages of data entry during the interview and consistency check

1. Export data from Tablet
2. Machine edit (by CSpro program)
 - Structural Check
 - Range Check
 - Consistency Check
3. Table tabulation
4. Check the accuracy of data
5. Analysis and reporting

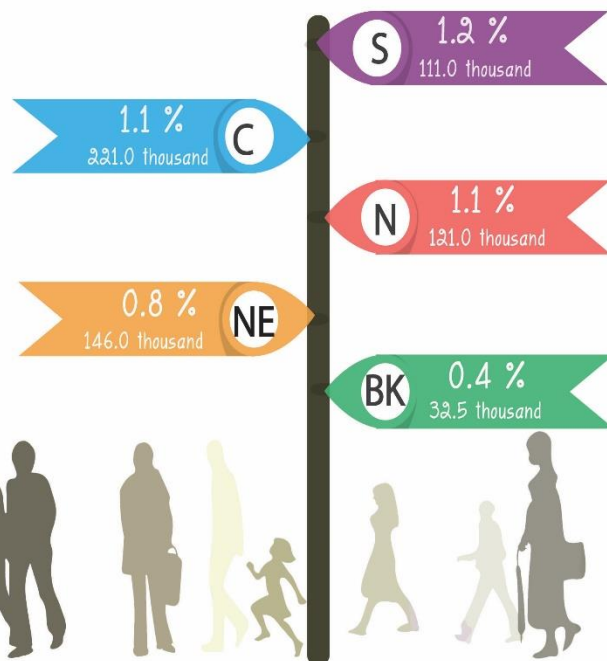
DEFINITION -- MIGRATION



**The 2017 Migration: Moving from one area to another,
between October 1, 2016 to September 30, 2017**

RESULTS OF THE 2017 MIGRATION SURVEY

Migration Rate by Region



Population in Thailand
67.70 million persons

non-migrants
67.06 million persons (99.1 %)

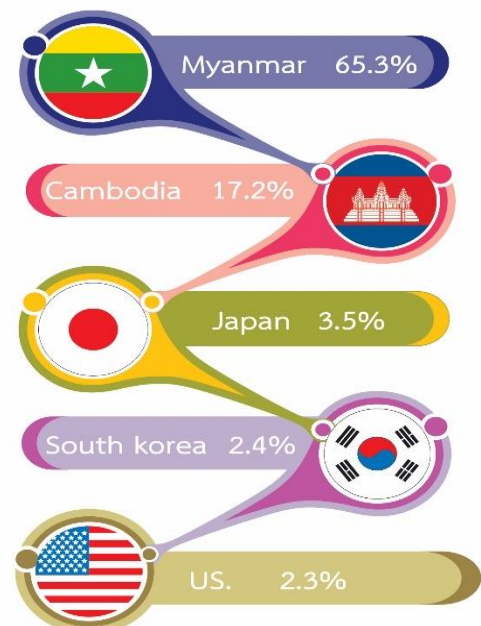
migrants
0.63 million persons (0.9 %)

Moving in Thailand
608.0 thousand (96.2%)

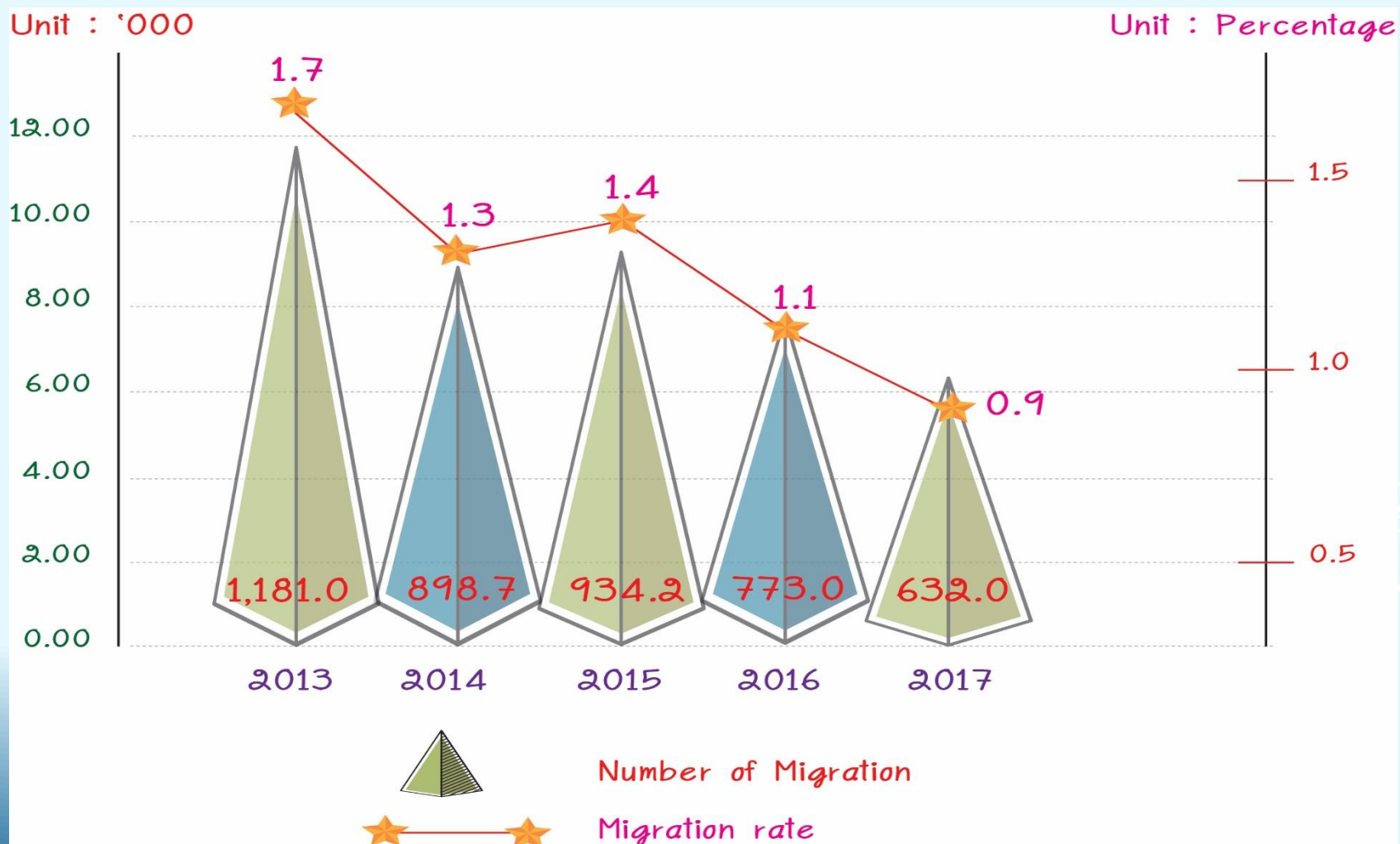
Moving from abroad
24.0 thousand (3.8%)



Top 5 countries moving to Thailand



NUMBER OF MIGRANTS AND MIGRANTS RATE IN 2013-2017

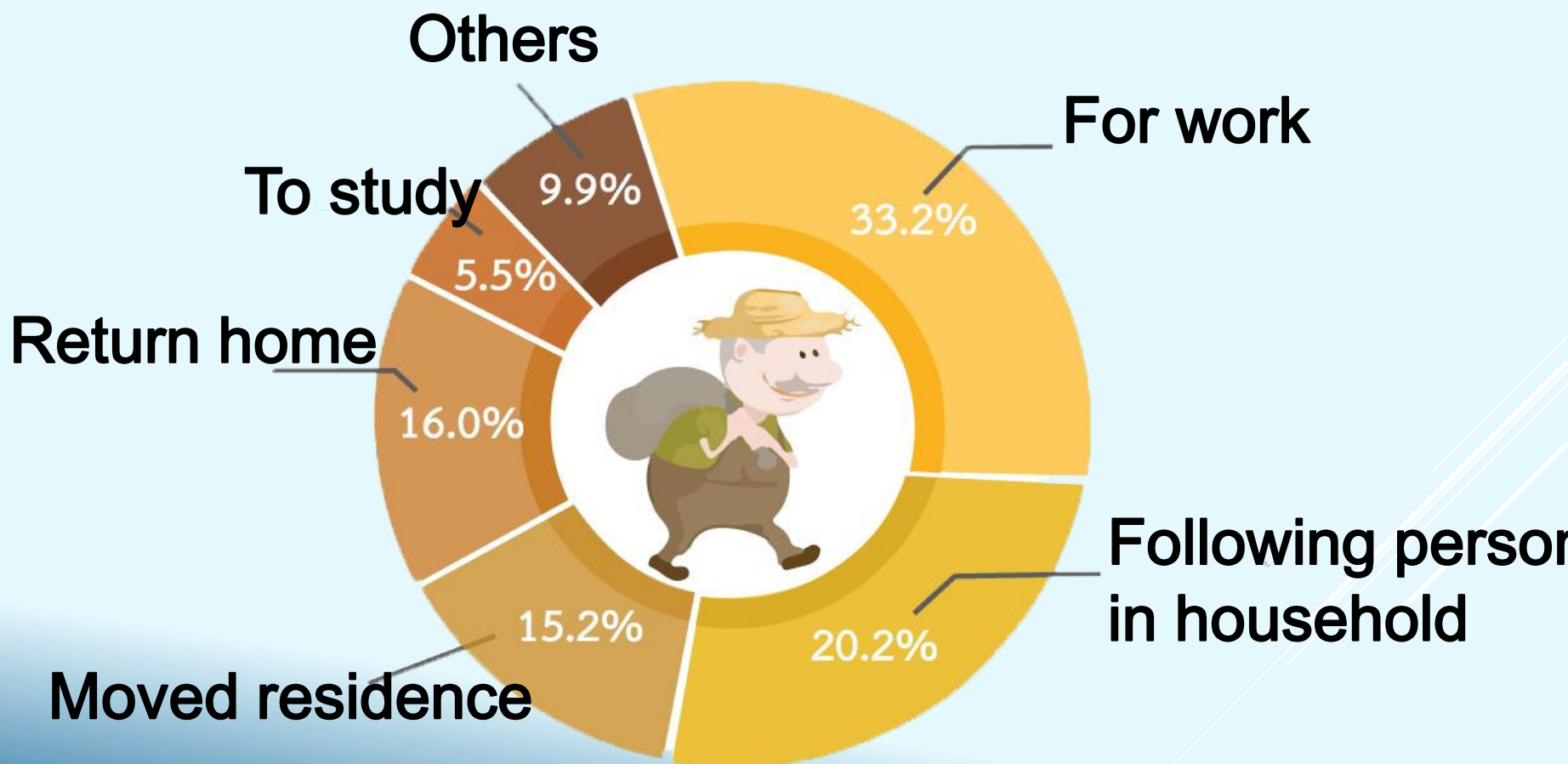


NUMBER OF MIGRANTS BY TYPE OF MIGRATION

Unit :
Person

Type of Migration	Years				
	2013	2014	2015	2016	2017
Migration	1,181,036	898,697	934,215	773,009	631,976
Internal migrants moving within region	635,002	503,054	540,697	520,902	400,802
Migrant moving between provinces	241,239	157,111	159,290	151,850	107,004
Migrant moving within Province	393,764	345,943	381,407	369,052	293,798
Internal migrants moving across region	504,990	350,216	335,588	232,103	207,139
External migrants moving from abroad	41,044	45,427	57,930	20,004	24,035

PERCENTAGE OF MIGRANTS BY REASON FOR MIGRATION IN 2017



NUMBER OF MIGRATION BY LABOUR FORCE STATUS

Unit : '000 pers

Labour Force Status	Year			
	2014	2015	2016	2017
Population \geq 15 years of age	803.1	819.1	682.1	556.0
Total Labour force	592.7	596.5	520.8	420.0
1. Current labour force	592.5	596.0	520.8	416.8
1.1 Employed	568.3	571.9	489.6	395.1
1.2 Unemployed person	24.2	24.2	31.1	21.7
2. Seasonal Inactive Labour Force	0.2	0.4	0.0	3.1
Not in labour force \geq 15 years of age	210.3	222.6	161.3	136.0
Labour force participation rate	73.8	72.8	76.4	75.5
Unemployment rate	4.1	4.1	6.0	3.9
Not in labour force rate	26.2	27.2	23.6	24.5



THANK YOU
www.nso.go.th